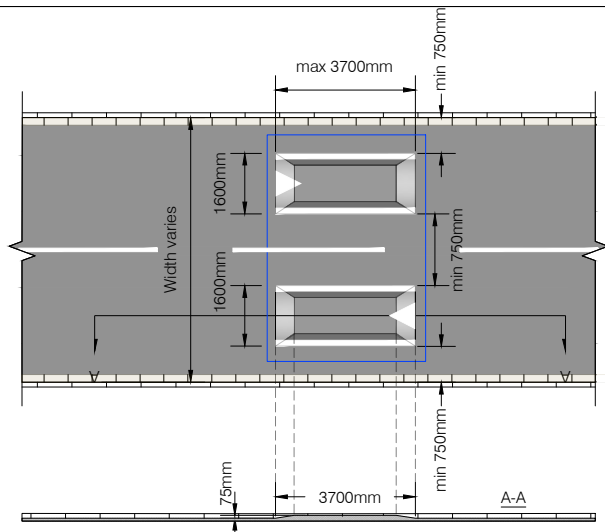


New (1600mm wide, 70mm high) speed cushions to be installed. Exact dimensions to be specified at detailed design phase.

Detail 1-1



Area of imprinted material (block paving pattern) flush with existing carriageway level.

FURZE PLATT JUNIOR SCHOOL

FURZE PLATT INFANT SCHOOL

Proposed speed cushions (See Detail 1-1) & area of imprinted material (block paving pattern) flush with existing carriageway level.

Existing crossing point to be upgraded to raised Zebra crossing.

Area of imprinted material (block paving pattern) flush with existing carriageway level.

Proposed alternative school traffic controller position.

Proposed speed cushions (See Detail 1-1) & area of imprinted material (block paving pattern) flush with existing carriageway level.

Area of imprinted material (block paving pattern) flush with existing carriageway level.



Proposed 20mph speed limit between points A-A, B-B, C-C, D-D & E-E. Speed limit repeater signs to be installed in locations TBC.

DRAFT

PROJECT CENTRE



Unit 2 Halford Yard
London
WC1X 9HD
Tel: 0330 0080 855
Mail: info@projectcentre.co.uk
Web: www.projectcentre.co.uk
FS 77166

Client



Project
COURTHOUSE ROAD, MAIDENHEAD
LOCAL SAFETY SCHEME

Drawing Title

OUTLINE DESIGN
OPTION B

Rev	Date	Description	Drn.	Chkd.	App.
-	DEC 2019	ORIGINAL ISSUE	PT	HJ	RB

Suitability Status
FOR CONSULTATION

Drawn	Designed	Date	Scale	Size
PT	RB / PT	DEC 2019	NTS	A3

Document No. PC5506-TRP-HGN-00-DR-TE-CD23_19_5-02 | Suitability Code Rev S3 -